

PRESS RELEASE

PRESS RELEASE

Nr. 04 | 2022

March 16, 2022 || Page 1 | 6

Joining with solid-state lasers set to revolutionize steel construction

Fraunhofer at the Hannover Messe Preview 2022

(Dresden 03/16/2022) Energy and resource efficiency are gaining ever more significance, which is why the Fraunhofer Institute for Material and Beam Technology IWS has worked with its partners to develop an alternative for conventional steel construction that not only constitutes a process technology solution, but also forms the basis for hardware and laser safety. This solution facilitates gentler machining of high-strength materials, as well as significantly reducing energy consumption and costs while greatly increasing process speed. The energy in-put required for the component can be reduced by up to 80 percent compared with conventional joining processes. Not only that, subsequent straightening of the component is eliminated entirely from the process.

Many technical structures feature some form of steel construction. Be it a container ship, railway vehicle, bridge or wind turbine tower, any one of these structures can have several hundred meters of welding seams. Conventional industrial processes such as metal active gas welding or submerged arc welding are usually used for this purpose. Here's the problem: Due to the low intensity of the arc, a large proportion of the energy expended is not actually used in the welding process, but is lost to the component in the form of heat. The energy required for post-weld treatment is often of a similar magnitude to that required for the welding process itself. "These energy-intensive processes cause significant thermal damage to the material and result in severe distortion of the structure, which then demands very costly straightening work afterwards," emphasizes Dr. Dirk Dittrich, who heads up the Laser Beam Welding group at Fraunhofer IWS.

Powerful laser welding process

A team of researchers led by Dr. Dittrich has developed an energy-efficient alternative together with industrial partners as part of the "VE-MES – Energy-efficient and low-distortion laser multi-pass narrow-gap welding" project. Laser multi-pass narrow-gap welding (laser MPNG, see box below) uses a commercially available high-power laser and stands out from conventional methods thanks to its reduced number of layers and

Project funded by:

Saxony State Ministry of Economic
Affairs, Labour and Transport

Grant number: 100284836

Duration: 08/14/2017 – 02/29/2020

Europa fördert Sachsen.



Europäische Union

Head of Corporate Communications

Markus Forytta | Fraunhofer-Institut für Werkstoff- und Strahltechnik IWS | Phone +49 351 83391-3614 | Winterbergstraße 28 | 01277 Dresden | www.iws.fraunhofer.de | markus.forytta@iws.fraunhofer.de

Group Manager Laser Welding

Dr. Dirk Dittrich | Fraunhofer-Institut für Werkstoff- und Strahltechnik IWS | Phone +49 351 83391-3228 | Winterbergstraße 28 | 01277 Dresden | www.iws.fraunhofer.de | dirk.dittrich@iws.fraunhofer.de

FRAUNHOFER-INSTITUT FÜR WERKSTOFF- UND STRAHLTECHNIK IWS

drastically reduced seam volume. These elements of the welding process are its key benefits. "Depending on the component, we can reduce the energy input for the component during welding by up to 80 percent, and we can lower filler material consumption by up to 85 percent compared to conventional arc processes," reports Dr. Dittrich. "What's more, it was not necessary to carry out a straightening process on the component studied. As a result, we can cut production time and costs, process high-strength steel materials and significantly improve the CO₂ balance of the entire production chain. Given the significant number of steel structures being built in Germany and around the world, this could prove to be hugely advantageous." This is because the high intensity of the laser beam guarantees that the energy input is highly localized at the welding point, whereas the surrounding areas of the component remain comparatively cold. "The welding time is also reduced by 50 to 70 percent," says Dittrich, citing another advantage. The new process also excels in terms of weld seam quality – the seams are significantly slimmer and the edges are virtually parallel, whereas in conventional welding processes the seams are V-shaped. "If laser welding were used in steel construction processes, it would become a unique selling point for medium-sized businesses in Germany and strengthen its market position in the face of international competition," says Dittrich with confidence. "We are providing the industry with an efficient form of joining technology that is set to revolutionize steel construction on account of its cost-effective application and resource-saving production process."

Research in practice: Steel girders for indoor crane construction

The researchers from Fraunhofer IWS demonstrated the performance of their new development using a practical example from indoor crane construction. They deployed the new welding technology using special system technology and an integrated beam protection concept. The design of the experimentally built, four-meter-long rectangular profile of an indoor crane segment conformed to the design and manufacturing guidelines of comparable, conventionally produced components. Weld seams typical of the application were produced: a butt joint on 30-millimeter plates and a fully joined T-joint (15-millimeter plate). For a one-meter weld seam, it was possible to reduce the costs for a sheet thickness of 30 millimeters by 50 percent compared with submerged arc welding, including the subsequent straightening process. For sheet thicknesses of less than 20 millimeters, where metal active gas welding processes are also commonly used, the potential cost savings are even higher at up to 80 percent. The cost savings in terms of welding filler materials alone can amount to more than 100,000 euros per year for larger companies. In addition, the laser beam sources used offer great potential for stemming rising energy costs due to their high efficiency (approximately 50 percent) and good process efficiency (reduction of energy input by 80 percent). With this evidence of practical suitability, the approach can now be extended to other applications.

PRESS RELEASE

Nr. 04 | 2022

March 16, 2022 || Page 2 | 6

Project funded by:

Saxony State Ministry of Economic
Affairs, Labour and Transport

Grant number: 100284836

Duration: 08/14/2017 – 02/29/2020

Europa fördert Sachsen.
EFRE 
Europäischer Fonds für
regionale Entwicklung

**Europäische Union**

The **Fraunhofer Institute for Material and Beam Technology IWS Dresden** develops complex system solutions in materials and laser technology. We define ourselves as idea drivers developing customized solutions based on laser applications, functionalized surfaces as well as material and process innovations – from easy-to-integrate custom solutions to cost-efficient solutions for small and medium-sized enterprises to industry-ready one-stop solutions. Our research focuses on aerospace, energy and environmental technology, automotive, medical and mechanical engineering, toolmaking, electrical engineering and microelectronics, and photonics and optics sectors. In our five future and innovation fields of battery technology, hydrogen technology, surface functionalization, photonic production systems and additive manufacturing, we are already creating the basis today for the technological answers of tomorrow.

Infobox

Principle of laser multi-pass narrow-gap welding

The laser is positioned at the joint between the two sheet edges to be welded while a filler metal is added. The energy of the laser beam melts the edges of the workpieces, as well as the filler metal from the wire, which then fills the void between the two pieces and creates a high-quality weld seam. The process can be used to weld typical joint configurations in steel construction. The sheet edges are plasma-cut and the joint sometimes has gaps up to two millimeters wide, which the laser welding process can reliably bridge. When welding either a web plate (T-joint) or a butt joint, the process ensures that the joint is complete, i.e., that the two parts are joined across the entire contact area. In conventional steel construction, this is not always 100 percent guaranteed due to the process involved, and there are technological limits, particularly when using T-joints.

PRESS RELEASE

Nr. 04 | 2022

March 16, 2022 || Page 3 | 6

Project funded by:

Saxony State Ministry of Economic
Affairs, Labour and Transport

Grant number: 100284836

Duration: 08/14/2017 – 02/29/2020

Europa fördert Sachsen.



Europäische Union



Dr. Dirk Dittrich from Fraunhofer IWS has developed an improved laser welding process with a team from research and industry. Using a laser-welded indoor crane segment, the team pointed out that the process can save considerable resources in steel construction.

© René Jungnickel/Fraunhofer IWS

PRESS RELEASE

Nr. 04 | 2022

March 16, 2022 || Page 4 | 6

Project funded by:

Saxony State Ministry of Economic
Affairs, Labour and Transport

Grant number: 100284836

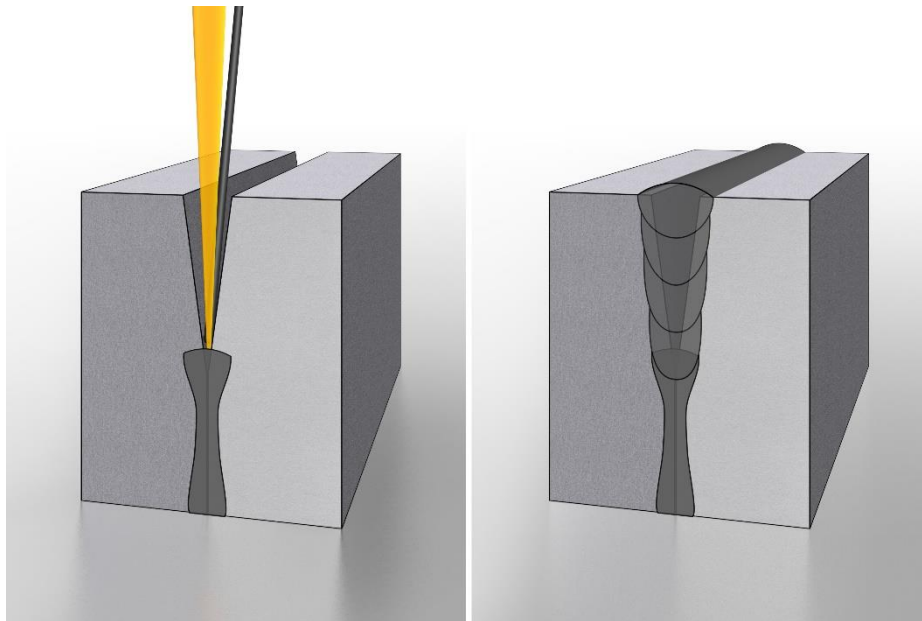
Duration: 08/14/2017 – 02/29/2020

Europa fördert Sachsen.



Europäische Union

The **Fraunhofer Institute for Material and Beam Technology IWS Dresden** develops complex system solutions in materials and laser technology. We define ourselves as idea drivers developing customized solutions based on laser applications, functionalized surfaces as well as material and process innovations – from easy-to-integrate custom solutions to cost-efficient solutions for small and medium-sized enterprises to industry-ready one-stop solutions. Our research focuses on aerospace, energy and environmental technology, automotive, medical and mechanical engineering, toolmaking, electrical engineering and microelectronics, and photonics and optics sectors. In our five future and innovation fields of battery technology, hydrogen technology, surface functionalization, photonic production systems and additive manufacturing, we are already creating the basis today for the technological answers of tomorrow.



The laser beam is positioned at the joint between the two sheet edges to be welded, and a filler metal is inserted in front of it at the same time. The process results in a high-quality welded seam.

© Fraunhofer IWS

PRESS RELEASE

Nr. 04 | 2022

March 16, 2022 || Page 5 | 6

Project funded by:

Saxony State Ministry of Economic
Affairs, Labour and Transport

Grant number: 100284836

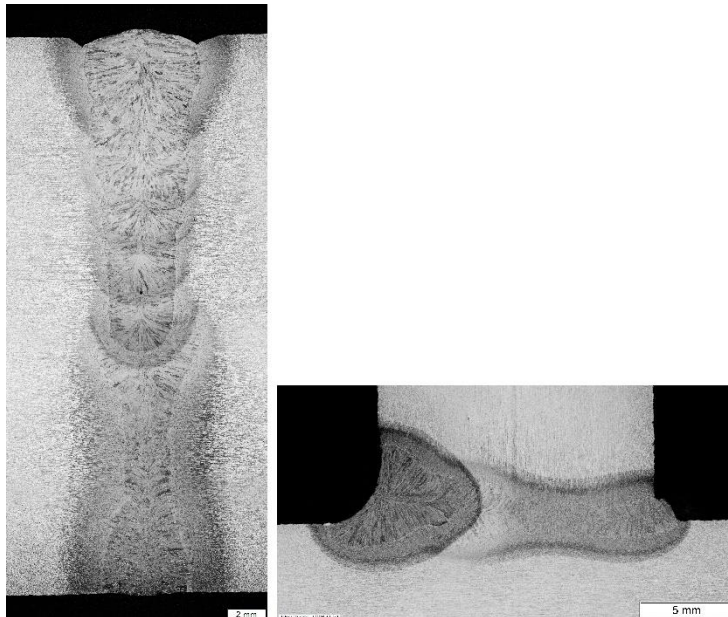
Duration: 08/14/2017 – 02/29/2020

Europa fördert Sachsen.



Europäische Union

The **Fraunhofer Institute for Material and Beam Technology IWS Dresden** develops complex system solutions in materials and laser technology. We define ourselves as idea drivers developing customized solutions based on laser applications, functionalized surfaces as well as material and process innovations – from easy-to-integrate custom solutions to cost-efficient solutions for small and medium-sized enterprises to industry-ready one-stop solutions. Our research focuses on aerospace, energy and environmental technology, automotive, medical and mechanical engineering, toolmaking, electrical engineering and microelectronics, and photonics and optics sectors. In our five future and innovation fields of battery technology, hydrogen technology, surface functionalization, photonic production systems and additive manufacturing, we are already creating the basis today for the technological answers of tomorrow.



The cross-sections of a butt joint and a T-joint produced using laser MPNG show the seam quality that can be produced with significantly reduced costs and re-source consumption.

© Fraunhofer IWS

PRESS RELEASE

Nr. 04 | 2022

March 16, 2022 || Page 6 | 6

Project funded by:

Saxony State Ministry of Economic
Affairs, Labour and Transport

Grant number: 100284836

Duration: 08/14/2017 – 02/29/2020

Europa fördert Sachsen.



Europäische Union

The **Fraunhofer Institute for Material and Beam Technology IWS Dresden** develops complex system solutions in materials and laser technology. We define ourselves as idea drivers developing customized solutions based on laser applications, functionalized surfaces as well as material and process innovations – from easy-to-integrate custom solutions to cost-efficient solutions for small and medium-sized enterprises to industry-ready one-stop solutions. Our research focuses on aerospace, energy and environmental technology, automotive, medical and mechanical engineering, toolmaking, electrical engineering and microelectronics, and photonics and optics sectors. In our five future and innovation fields of battery technology, hydrogen technology, surface functionalization, photonic production systems and additive manufacturing, we are already creating the basis today for the technological answers of tomorrow.